



9 Homeburn House, 177 Fenwick Road, Giffnock

[www.nicolestateagents.co.uk](http://www.nicolestateagents.co.uk)



Nicol Estate Agents





## Nicol Estate Agents

### Situation

Homeburn House is conveniently located for access to Lidl, Morrison's and Sainsbury's on Fenwick Road as well as The Avenue Shopping Centre and Waitrose at Greenlaw Village Retail Park.

Giffnock is acknowledged for its standard of local amenities and provides a selection of local shops, supermarkets, restaurants, regular bus and rail services to Glasgow City Centre, banks, library and health care facilities. Local sports and recreational facilities include Parklands Country Club, Cathcart, Williamwood and Whitecraigs Golf Clubs, several private bowling and tennis clubs, Rouken Glen Park, as well as East Renfrewshire Council's own excellent sports and leisure facilities at Eastwood Toll.

This popular suburb is located approximately 8 miles to the South of Glasgow's City Centre and is conveniently situated for commuter access to nearby M77/M8 & Glasgow Southern Orbital. Giffnock is considered one of the primary residential suburbs on the south side of Glasgow. The Sunday Times newspaper has voted Giffnock in the top 100 places to live within the UK.





## Description

Rarely available, a ground floor one bedroom garden flat, set within this popular and centrally located retirement development on Fenwick Road, close to public transport links and local shops.

On entering the development, there is a well maintained residents' lounge. There is elevator and stair access to all floors and all apartments are accessed via broad well-kept and illuminated hallways.

Reception hall with storage. Bright and spacious sitting/dining room with direct access to the front gardens of the development. Separate kitchen fitted with a range of wall mounted and floor standing units. Double bedroom with fitted wardrobes. A shower room completes the accommodation.

The property is further complemented by double glazing, electric storage heating, secure entry system and a house manager. The property also benefits from well kept landscaped communal garden grounds and private resident's parking facilities.





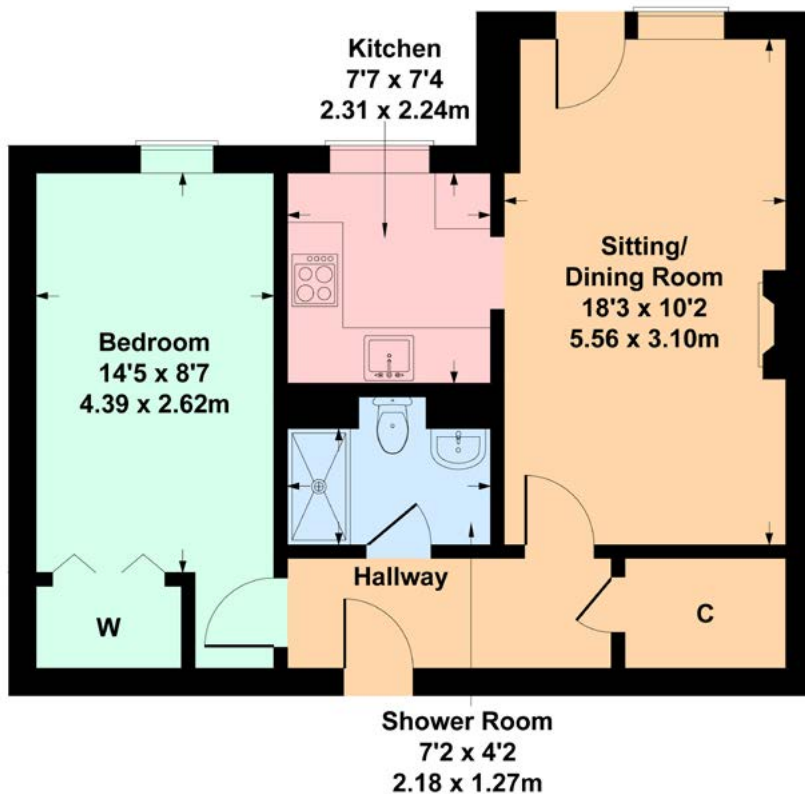


Nicol Estate Agents



### 9 Homeburn House, 177 Fenwick Road, Giffnock G46 6JD

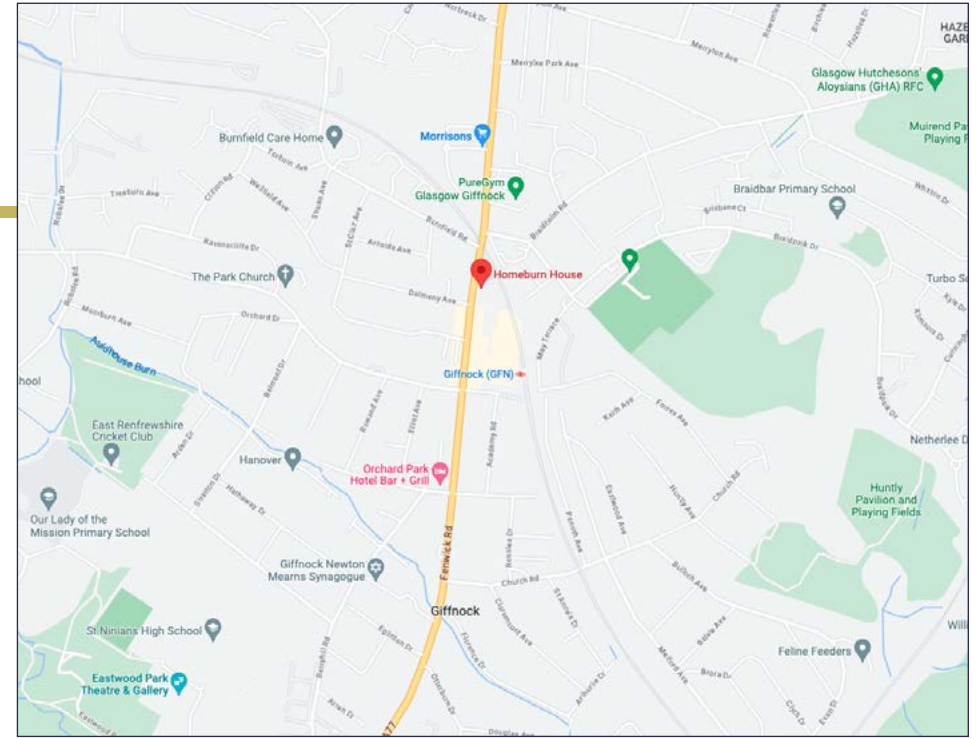
Approximate gross internal area 531 sq ft - 49 sq m



SKETCH PLAN FOR ILLUSTRATIVE PURPOSES ONLY

All measurements, walls, doors, windows, fitting and appliances, their sizes and locations are approximate only. They cannot be regarded as being a representation by the seller, nor their agent. produced by Potterplans Ltd. 2023

We believe these details to be accurate however it is not guaranteed and they do not form any part of a contract. Fixtures and fittings are not included unless specified in the enclosed. Photographs are for general information and it must not be inferred that any item is included for sale with the property. All distances and measurements are approximate. Floorplans may not be to scale and are for illustration purposes only.



#### Viewing

By appointment through  
Nicol Estate Agents  
1 Helena Place  
Clarkston G76 7RB  
Telephone 0141 638 4541  
clarkston@nicolestateagents.co.uk

#### Outgoings

East Renfrewshire Council  
Band D

#### Fixtures and Fittings

Only items specifically mentioned in the sale particulars are included in the sale price.

#### Energy Efficiency Rating

Band D

#### Services

The property will be supplied by mains water and electricity. Electric heating.

#### Local Authority

East Renfrewshire Council  
Eastwood Park  
Rouken Glen Road  
Giffnock  
G46 6UG  
Tel: (0141) 577 3000

Property Reference CLA462

1 Helena Place, Clarkston G76 7RB

T: 0141 638 4541 E: clarkston@nicolestateagents.co.uk

www.nicolestateagents.co.uk

