



Apt 2/2, 5 Douglas Court, Douglas Drive, Newton Mearns

www.nicolestateagents.co.uk



Nicol Estate Agents





Nicol Estate Agents

Situation

Newton Mearns is located approximately 9 miles from Glasgow City Centre. Commuter routes are served by the M77, M8 and Glasgow Orbital motorways which also provide 30 minute journey times to both Glasgow and Prestwick international airports. There are regular train and bus services to Glasgow, East Kilbride and the beautiful Ayrshire coast. Patterson Train Station is a short distance away.

Recognised as providing amongst the highest standards of local amenities, Newton Mearns offers an array of healthcare centres, banks and libraries and a broad range of supermarkets, boutique shops and restaurants, including The Avenue Shopping Centre. Also, close by, is the Greenlaw Retail Park which includes Waitrose, Tesco Metro, Aldi and a range of bars and restaurants. Silverburn shopping centre is only a short drive from the property.

A hugely popular suburb, Newton Mearns is a welcoming, family friendly town, with a fantastic, lively and inclusive community. If you choose to live in Newton Mearns, you will have access to some of Scotland's highest attaining primary and secondary schools, including Eastwood High and St. Ninian's High Schools.

Local sports and recreational facilities include David Lloyd's, Parklands Country Club, Williamwood and Whitecraigs Golf Clubs, several private bowling clubs and Whitecraigs tennis and rugby club, as well as East Renfrewshire Council's own excellent sports and leisure facilities at Eastwood Toll.









Description

A bright and spacious three bedroom second floor apartment, enjoying views over the extensive residents gardens and towards Whitecraigs Golf Course.

The accommodation comprises:

Well kept and illuminated communal entrance and stair access to all levels. Welcoming reception hallway with ample storage. A spacious dual aspect sitting room/dining room. Golf course views to the front of the property. Refitted kitchen, with a full range of wall mounted and floor standing units. Bedroom one with fitted wardrobes. Bedroom two, again a double bedroom with fitted wardrobes. Bedroom three. A bathroom with three piece white suite completes the accommodation.

The property is further complemented by gas central heating and double glazing. In addition, there is a private lock up garage and extensive resident's and visitor parking.









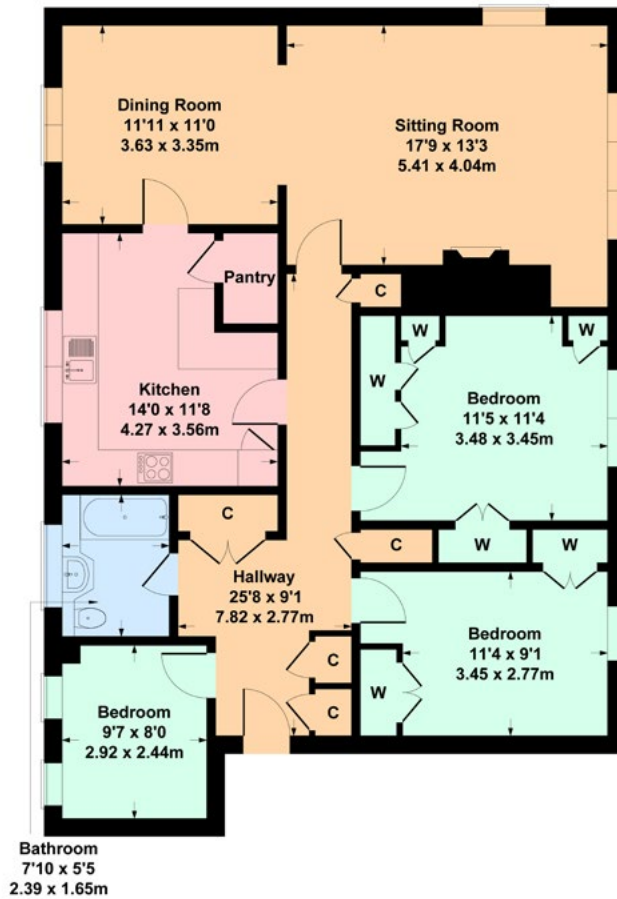


Nicol Estate Agents



Apt 2/2, 5 Douglas Court, Douglas Drive, Newton Mearns, G77 6HS

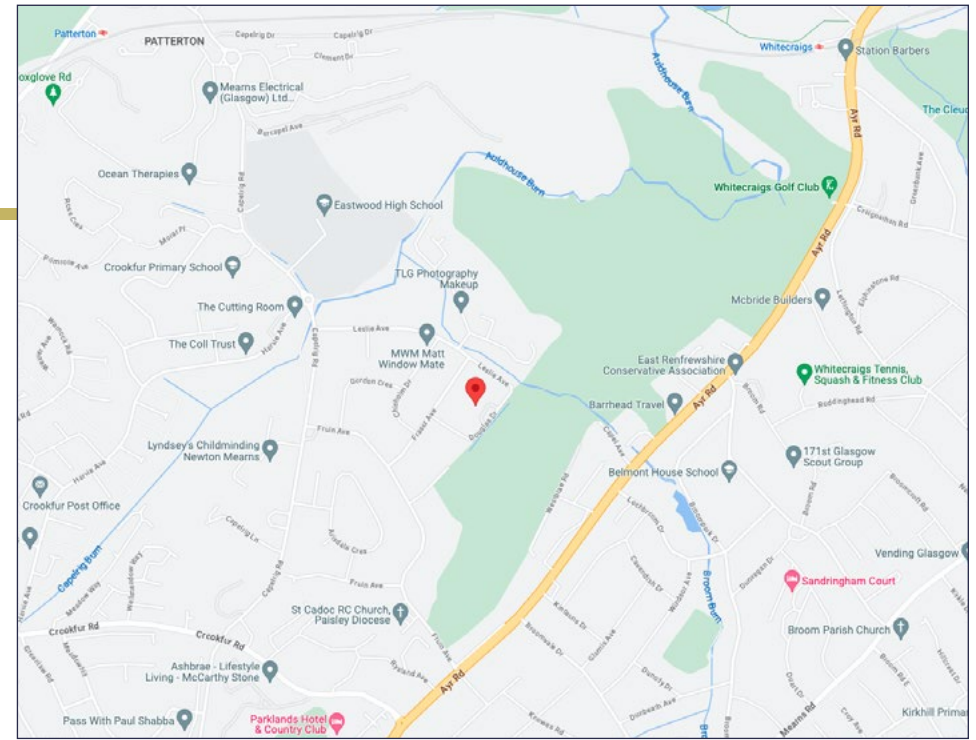
Approximate gross internal area 1223 sq ft - 114 sq m



SKETCH PLAN FOR ILLUSTRATIVE PURPOSES ONLY

All measurements, walls, doors, windows, fitting and appliances, their sizes and locations are approximate only. They cannot be regarded as being a representation by the seller, nor their agent. produced by Potterplans Ltd. 2023

We believe these details to be accurate however it is not guaranteed and they do not form any part of a contract. Fixtures and fittings are not included unless specified in the enclosed. Photographs are for general information and it must not be inferred that any item is included for sale with the property. All distances and measurements are approximate. Floorplans may not be to scale and are for illustration purposes only.



Viewing

By appointment through
Nicol Estate Agents
46 Ayr Road
Newton Mearns, Glasgow G46 6SA
Telephone 0141 616 3960
mail@nicolestateagents.co.uk

Outgoings

East Renfrewshire Council
Council Tax Band: E

Fixtures and Fittings

Only items specifically mentioned in the sale particulars are included in the sale price.

Energy Efficiency Rating

Band C

Services

The property will be supplied by mains water, electricity and drainage. Gas central heating.

Local Authority

East Renfrewshire Council
Eastwood Park
Rouken Glen Road
Giffnock G46 6UG
Tel: (0141) 577 3000

Property Reference 3032

46 Ayr Road, Newton Mearns, Glasgow G46 6SA
T: 0141 616 3960 F: 0141 258 2761 E: mail@nicolestateagents.co.uk

www.nicolestateagents.co.uk

