

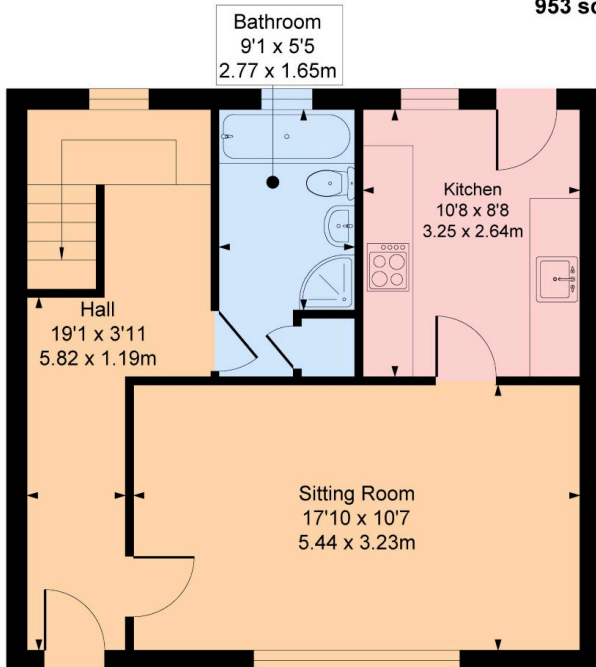


Nicol Estate Agents

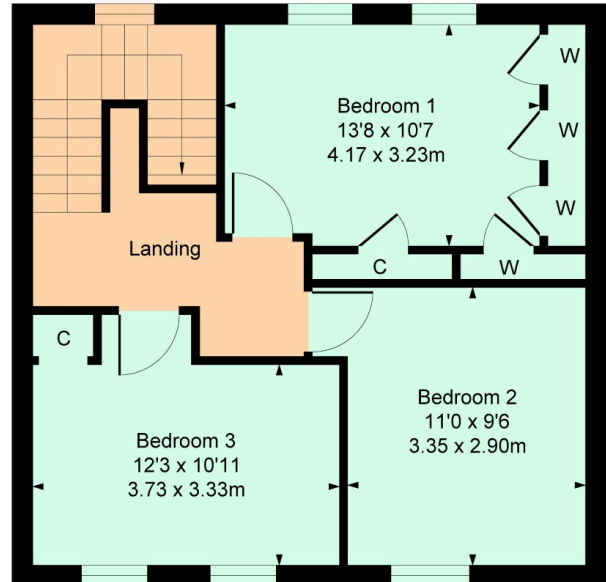
**4 Cartside Road, Busby**

Approximate Gross Internal Area

953 sq ft - 88.53 sq m



Ground Floor



First Floor

Floor Plan measurements are approximate and are for illustrative purposes only.  
While we do not doubt the floor plans accuracy, we make no guarantee, warranty or representation as to the accuracy and completeness of the floor plan. You or your advisors should conduct a careful, independent investigation of the property to determine to your satisfaction as to the suitability of the property for your space requirements.

Produced by Plushplans 